

PAGO

TÆKNILEGAR UPPLÝSINGAR **DURISOL**

ISOMETRIC VIEW – CORNER, DOOR AND WINDOW OPENING

PAGO

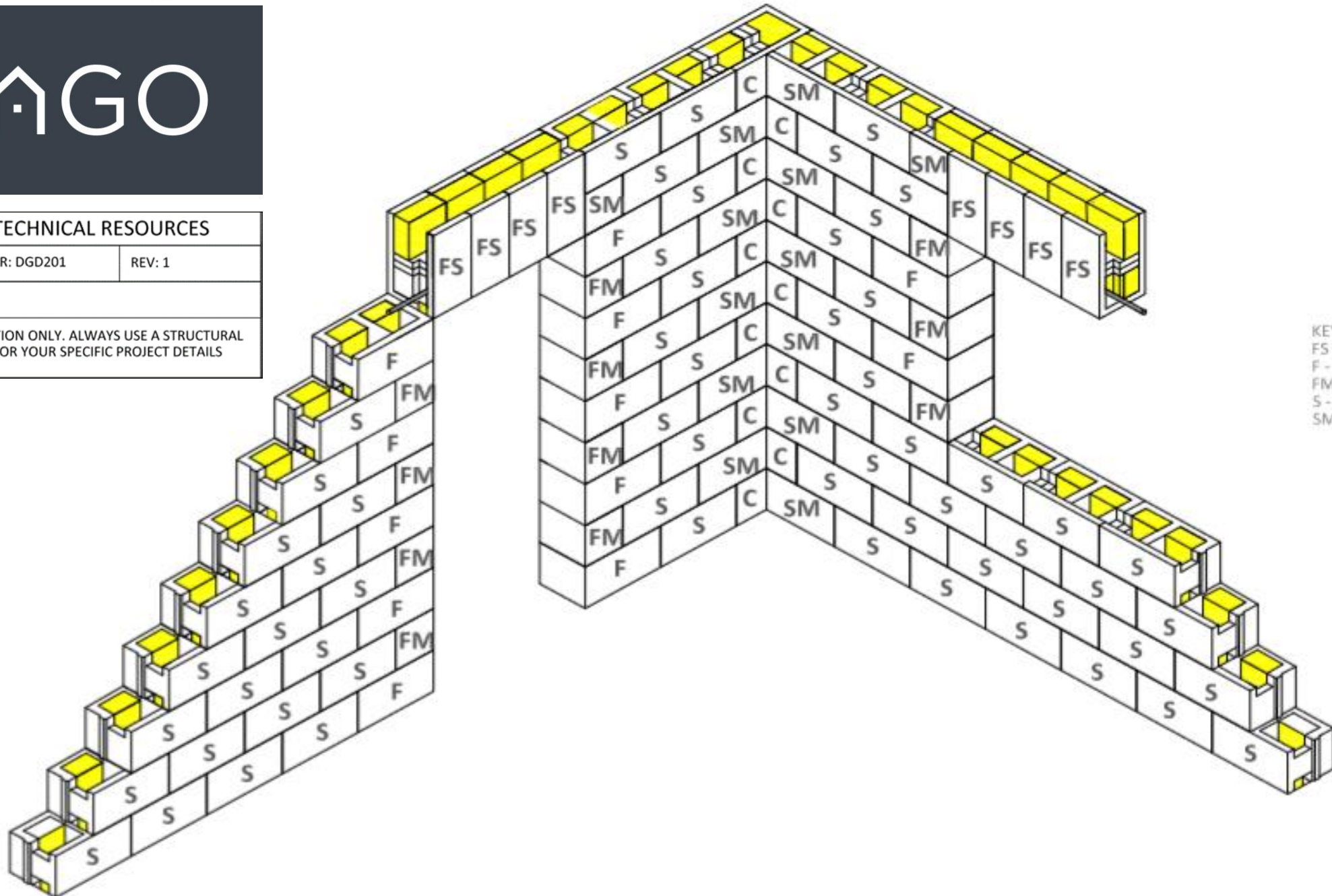
DURISOL TECHNICAL RESOURCES

DRAWING NUMBER: DGD201

REV: 1

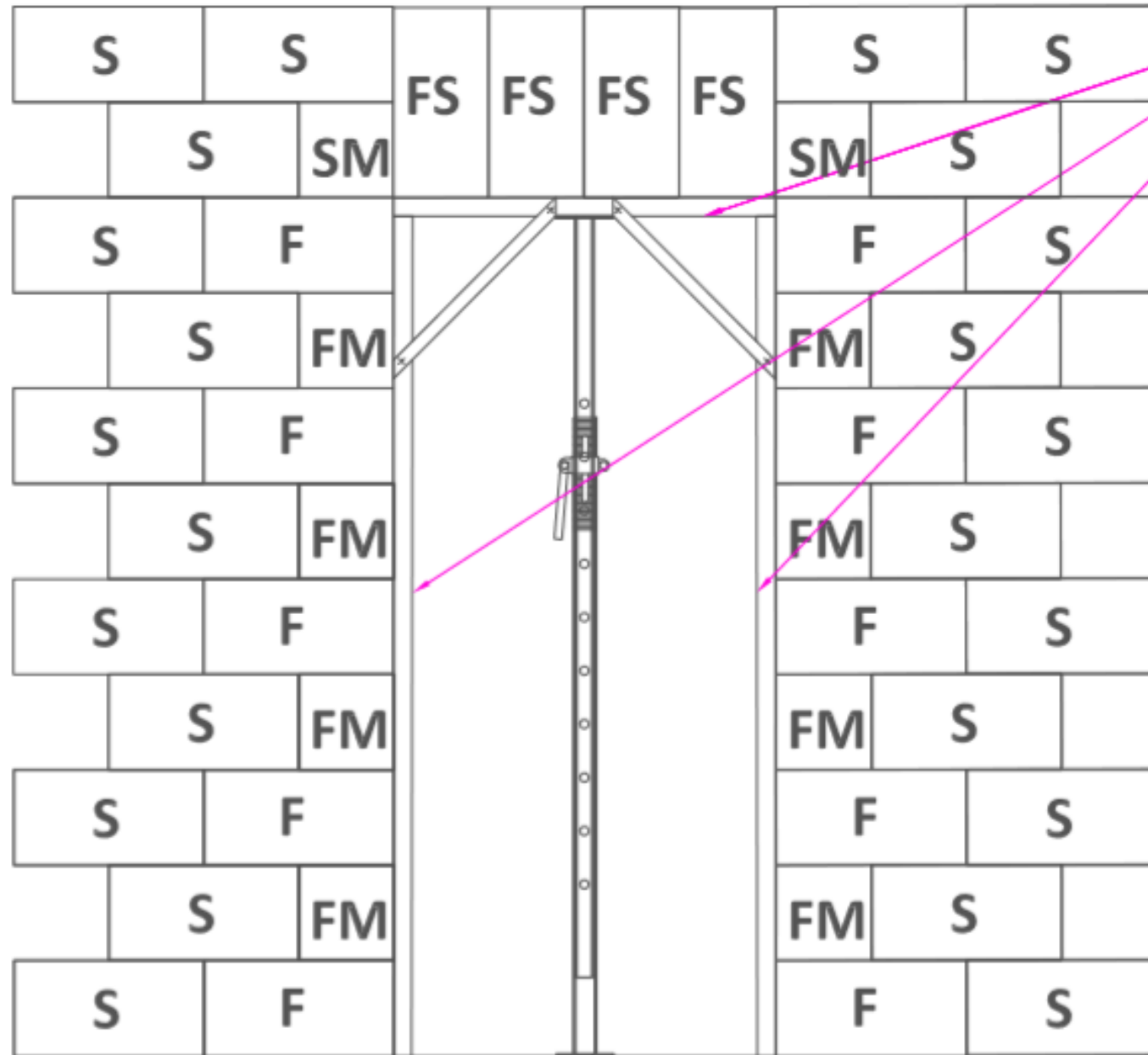
NOT TO SCALE

FOR INFORMATION ONLY. ALWAYS USE A STRUCTURAL ENGINEER FOR YOUR SPECIFIC PROJECT DETAILS



KEY TO BLOCK CODES
FS - FACE FORM SOLDIER
F - FACE FORM
FM - FACE FORM MODIFIED
S - STANDARD
SM - STANDARD MODIFIED

Temporary Propping Detail – Typical Detail



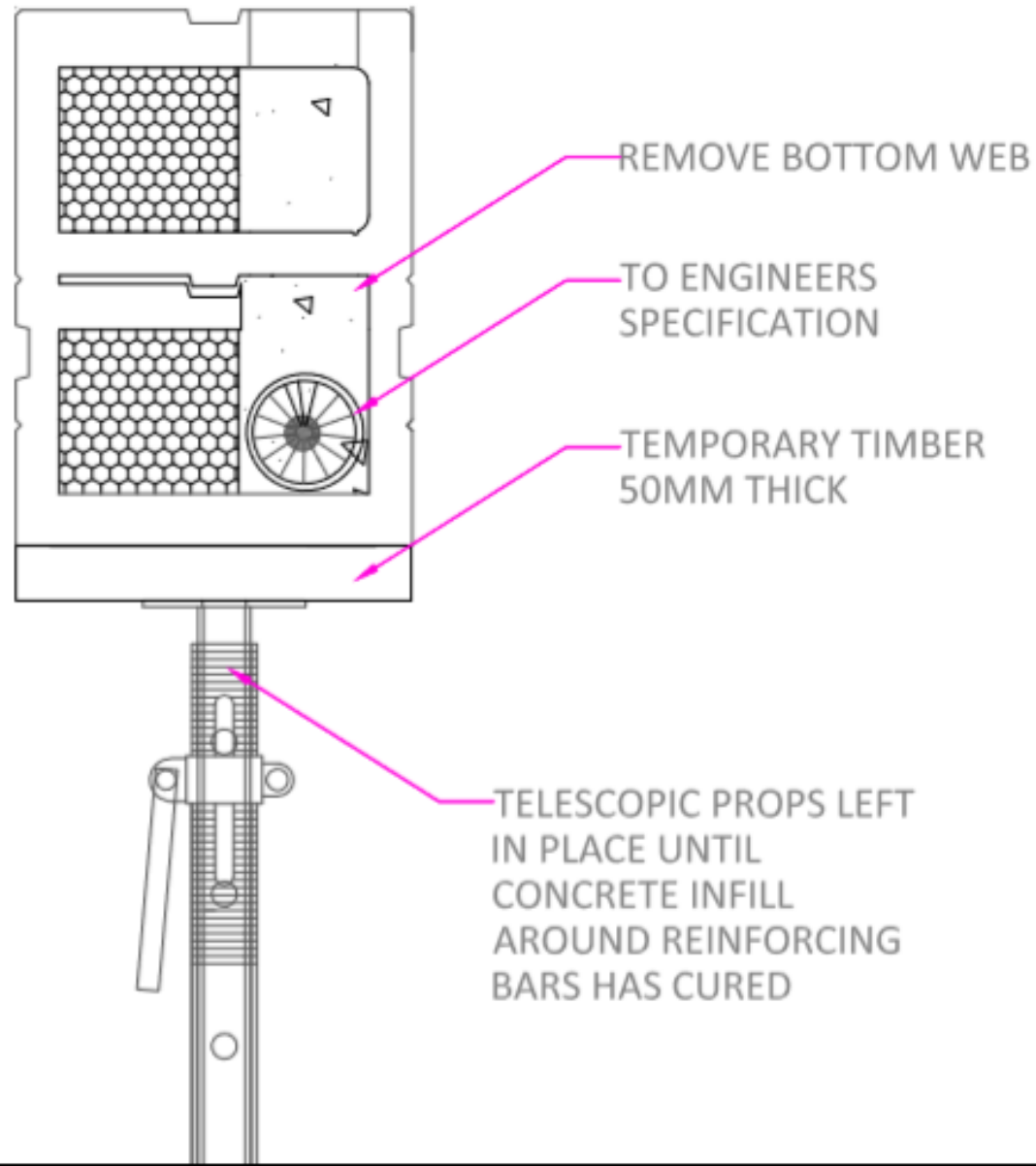
TIMBER GOAL POST



DURISOL TECHNICAL RESOURCES	
DRAWING NUMBER: DGD210	REV: 1
NOT TO SCALE	
FOR INFORMATION ONLY. ALWAYS USE A STRUCTURAL ENGINEER FOR YOUR SPECIFIC PROJECT DETAILS	

KEY TO BLOCK CODES
 FS - FACE FORM SOLDIER
 F - FACE FORM
 FM - FACE FORM MODIFIED
 S - STANDARD
 SM - STANDARD MODIFIED

TYPICAL TEMPORARY PROPPING DETAIL – SINGLE DOOR OPENING



PAGO

DURISOL TECHNICAL RESOURCES

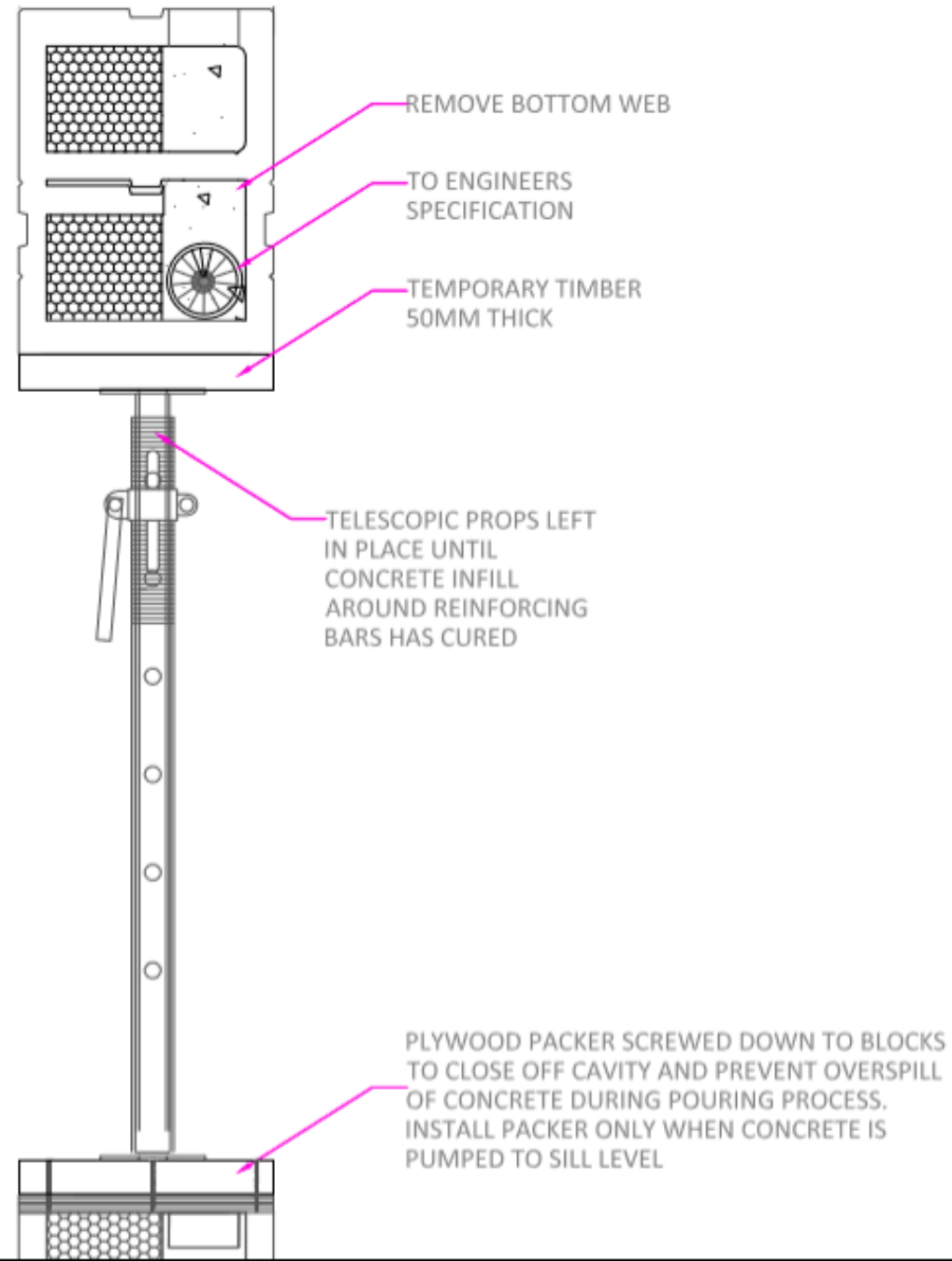
DRAWING NUMBER: DGD211

REV: 1

NOT TO SCALE

FOR INFORMATION ONLY. ALWAYS USE A STRUCTURAL ENGINEER FOR YOUR SPECIFIC PROJECT DETAILS

TYPICAL TEMPORARY PROPPING DETAIL – WINDOW OPENING



PAGO

DURISOL TECHNICAL RESOURCES

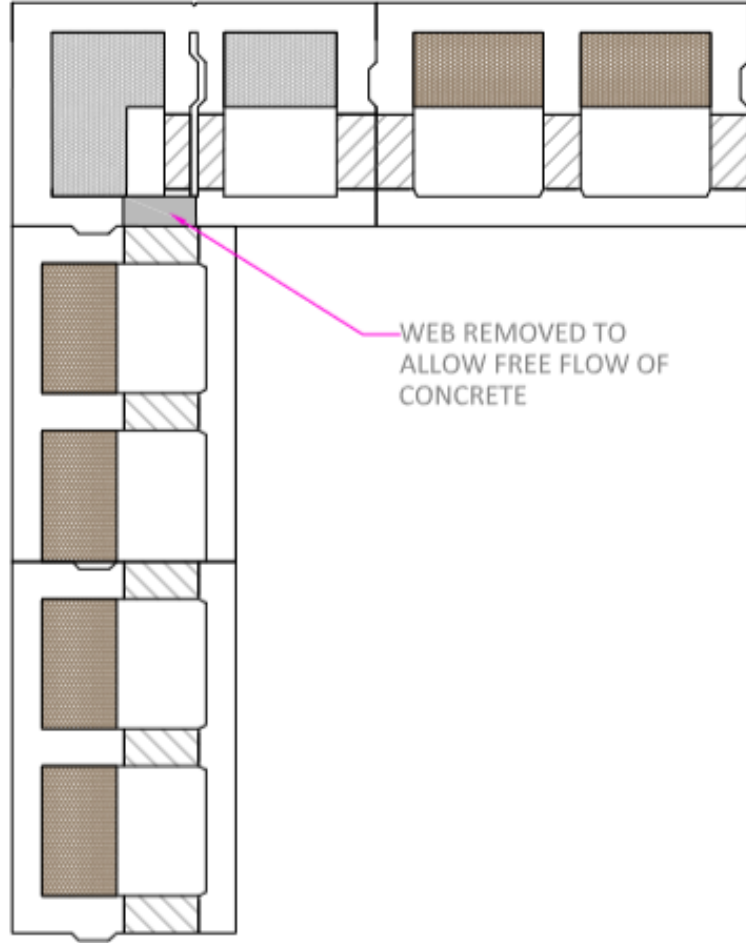
DRAWING NUMBER: DGD212

REV: 1

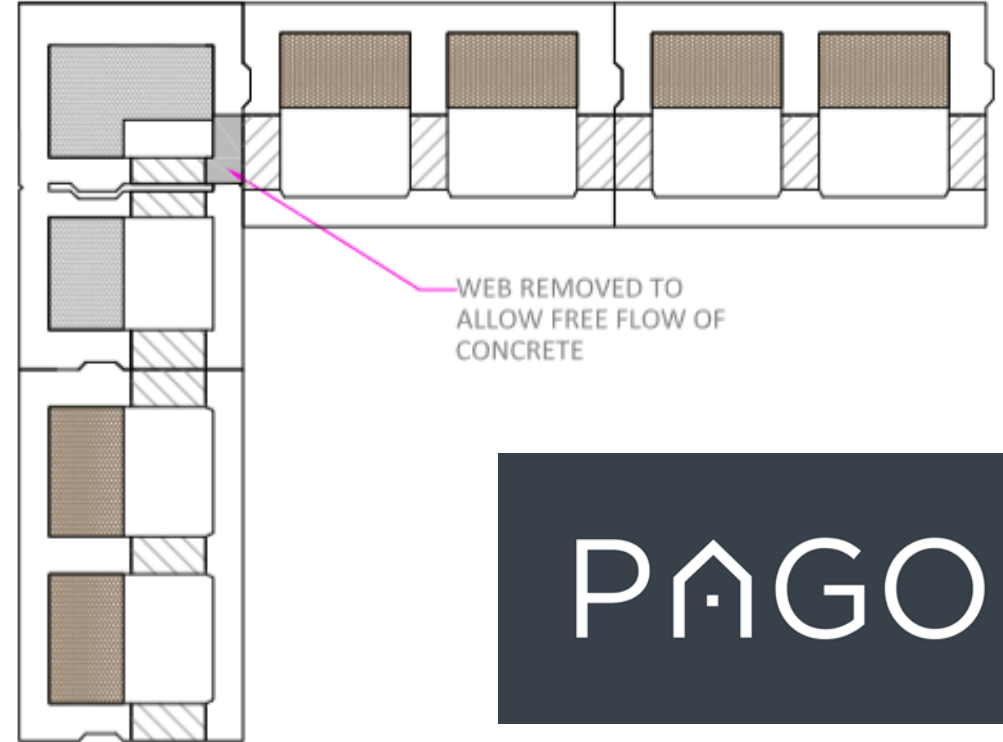
NOT TO SCALE

FOR INFORMATION ONLY. ALWAYS USE A STRUCTURAL ENGINEER FOR YOUR SPECIFIC PROJECT DETAILS

D300 CORNER DETAIL



FIRST COURSE



SECOND COURSE

PAGO

DURISOL TECHNICAL RESOURCES

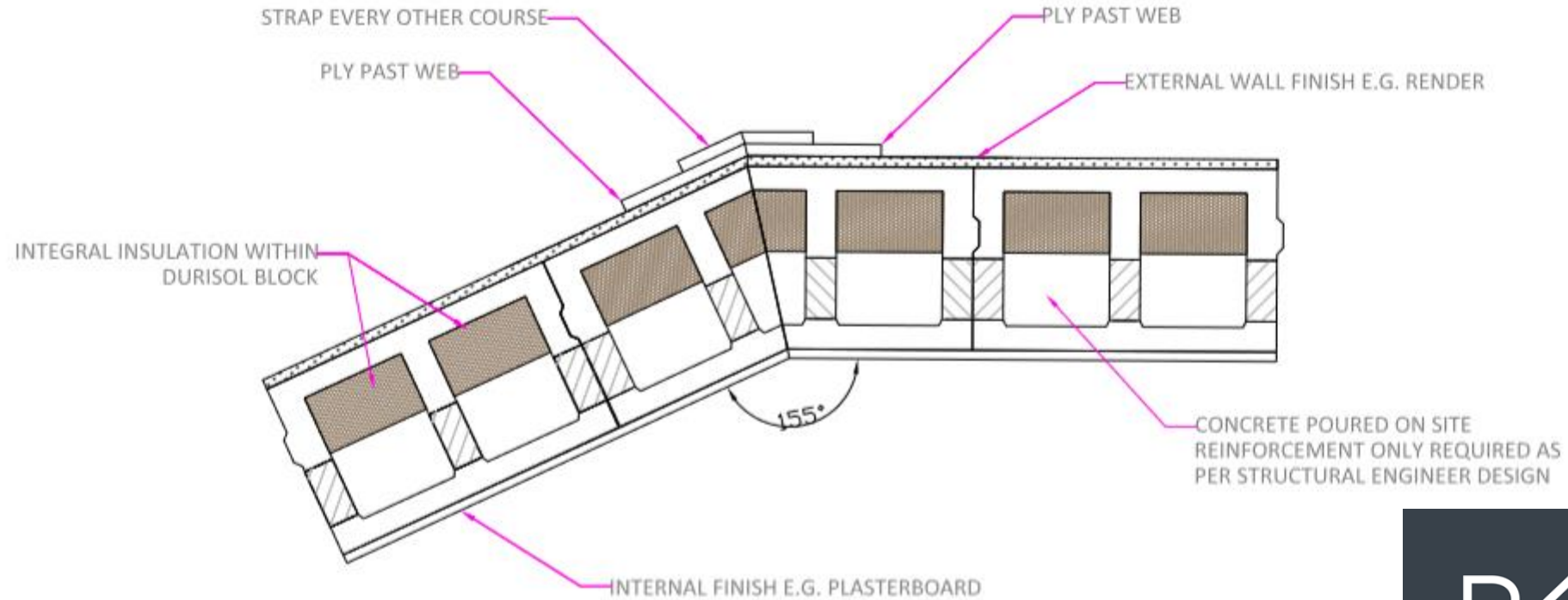
DRAWING NUMBER: DTP012

REV: 1

NOT TO SCALE

FOR INFORMATION ONLY. ALWAYS USE A STRUCTURAL ENGINEER FOR YOUR SPECIFIC PROJECT DETAILS

TYPICAL SPLAYED CORNER DETAIL



DURISOL BLOCKS CUT ON SITE TO REQUIRED ANGLE. BLOCK CUT TO ALLOW FOR FULL WIDTH OF INSULATION AT CORNER. IF SNUG FIT CANNOT BE ACHIEVED BETWEEN CUT BLOCKS UTILISE TEMPORARY SHUTTERING TO CONCRETE POUR

PAGO

DURISOL TECHNICAL RESOURCES

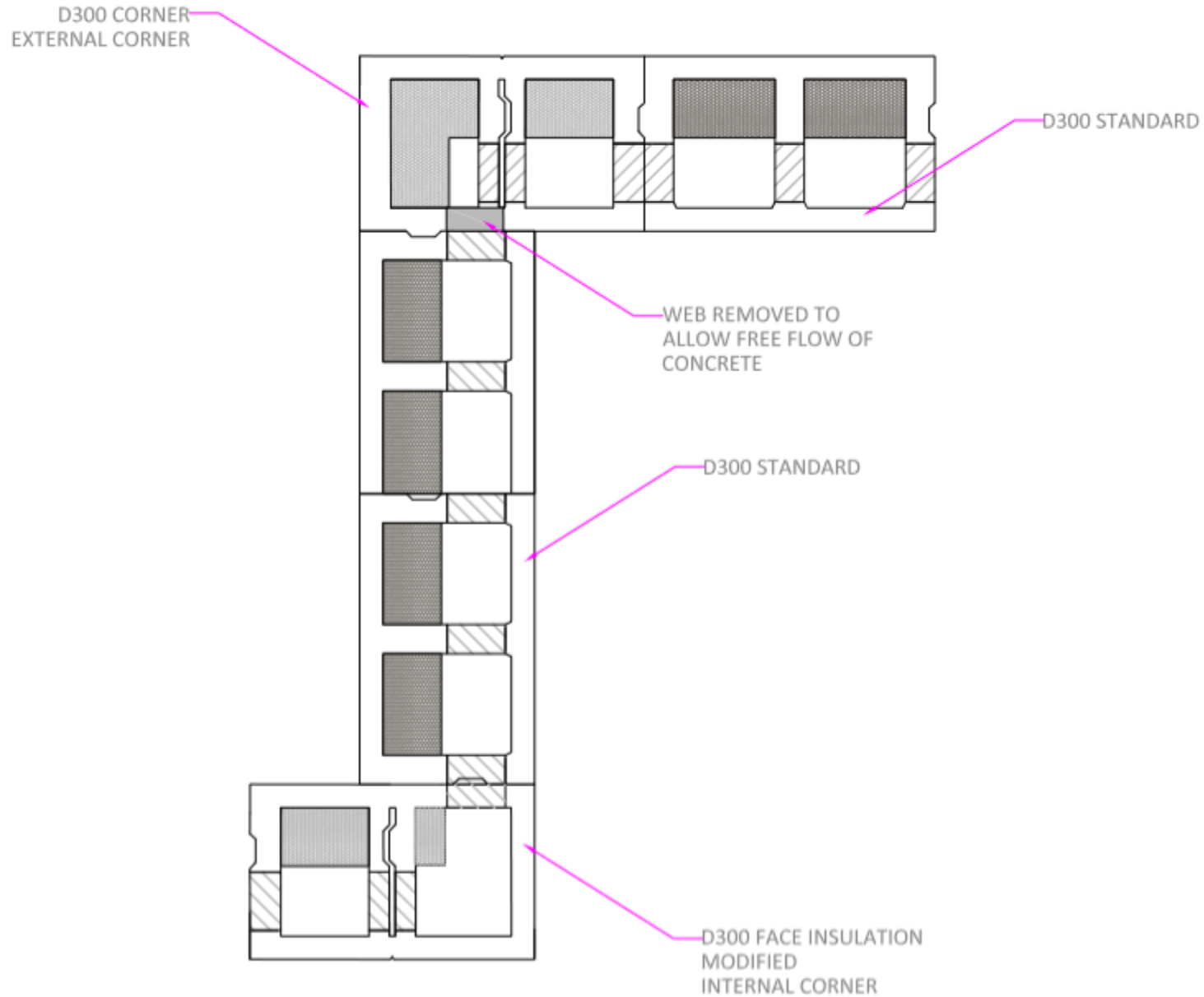
DRAWING NUMBER: DTP016

REV: 1

NOT TO SCALE

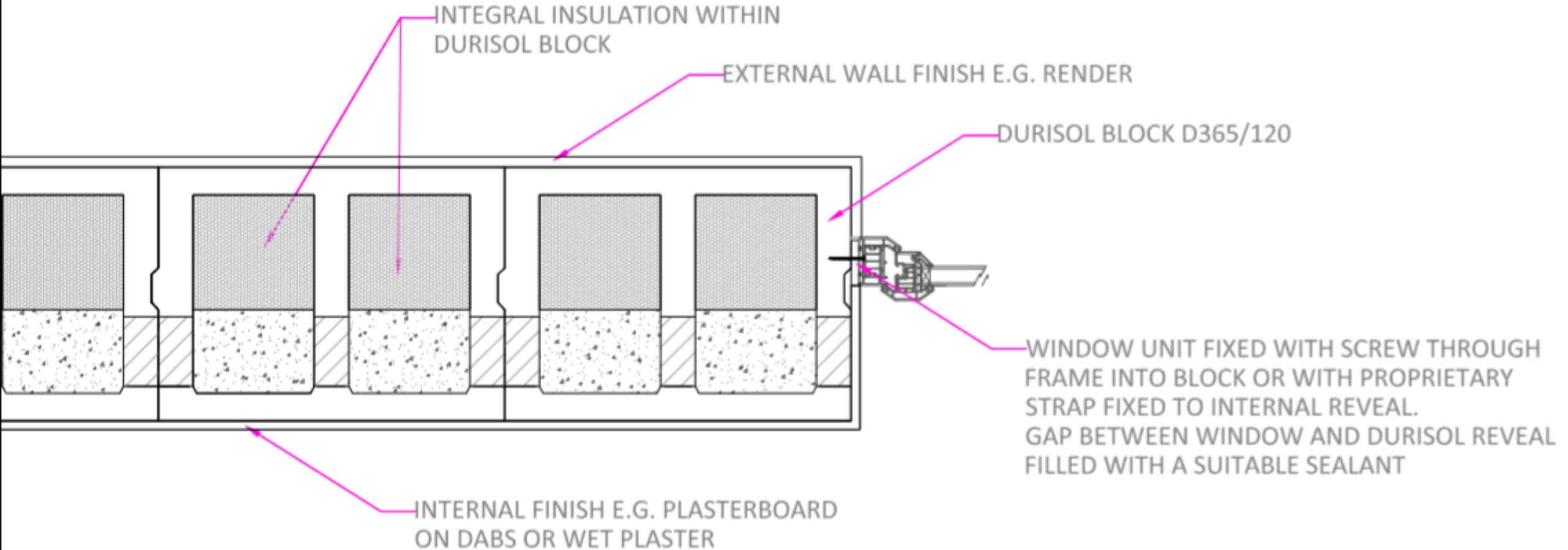
FOR INFORMATION ONLY. ALWAYS USE A STRUCTURAL ENGINEER FOR YOUR SPECIFIC PROJECT DETAILS

D300 INTERNAL AND EXTERNAL CORNER DETAIL



DURISOL TECHNICAL RESOURCES	
DRAWING NUMBER: DTP019	REV: 1
NOT TO SCALE	
FOR INFORMATION ONLY. ALWAYS USE A STRUCTURAL ENGINEER FOR YOUR SPECIFIC PROJECT DETAILS	

TYPICAL WINDOW JAMB DETAIL SECTION



DURISOL TECHNICAL RESOURCES

DRAWING NUMBER: DTP020

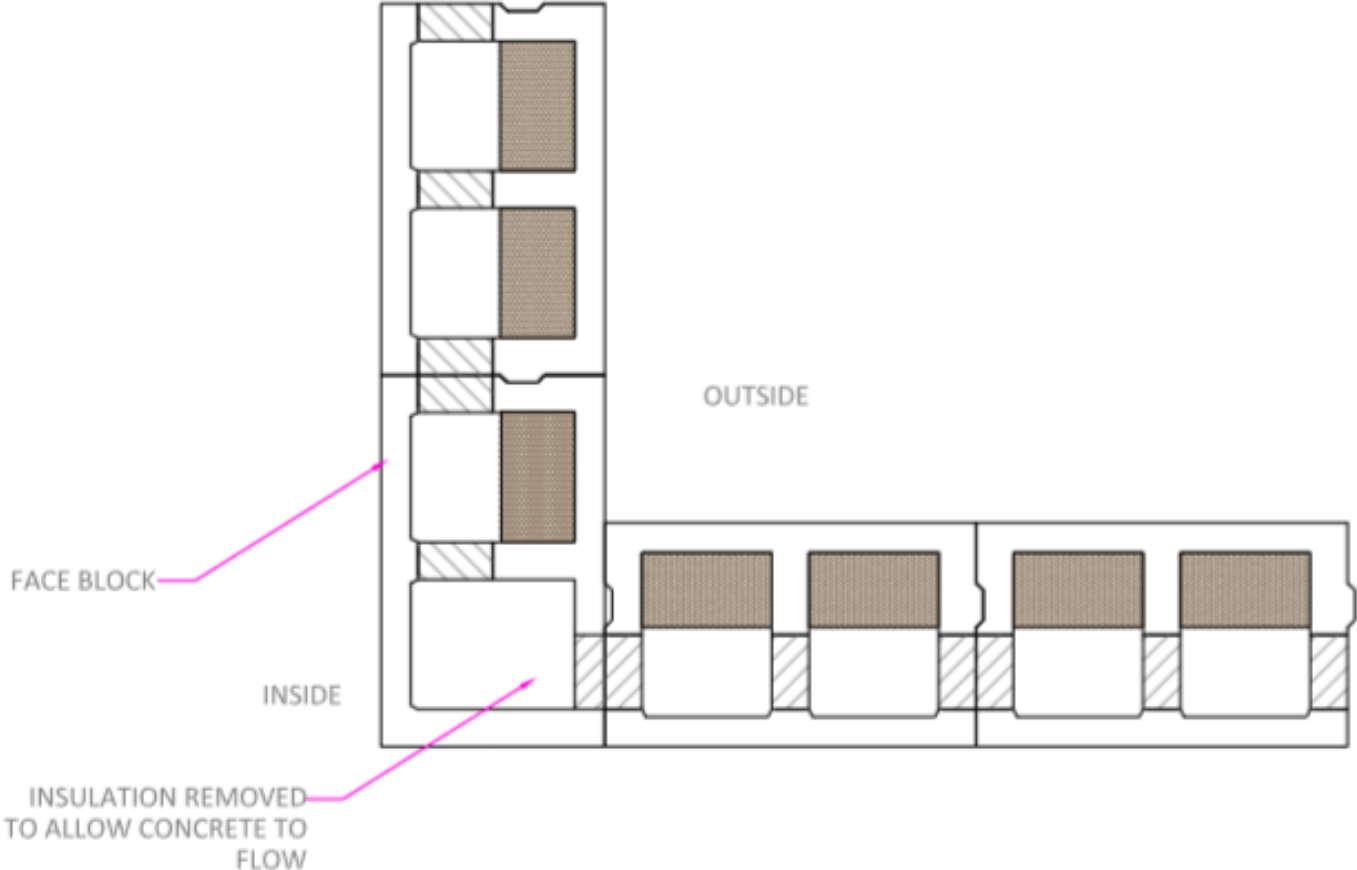
REV: 1

NOT TO SCALE

FOR INFORMATION ONLY. ALWAYS USE A STRUCTURAL ENGINEER FOR YOUR SPECIFIC PROJECT DETAILS

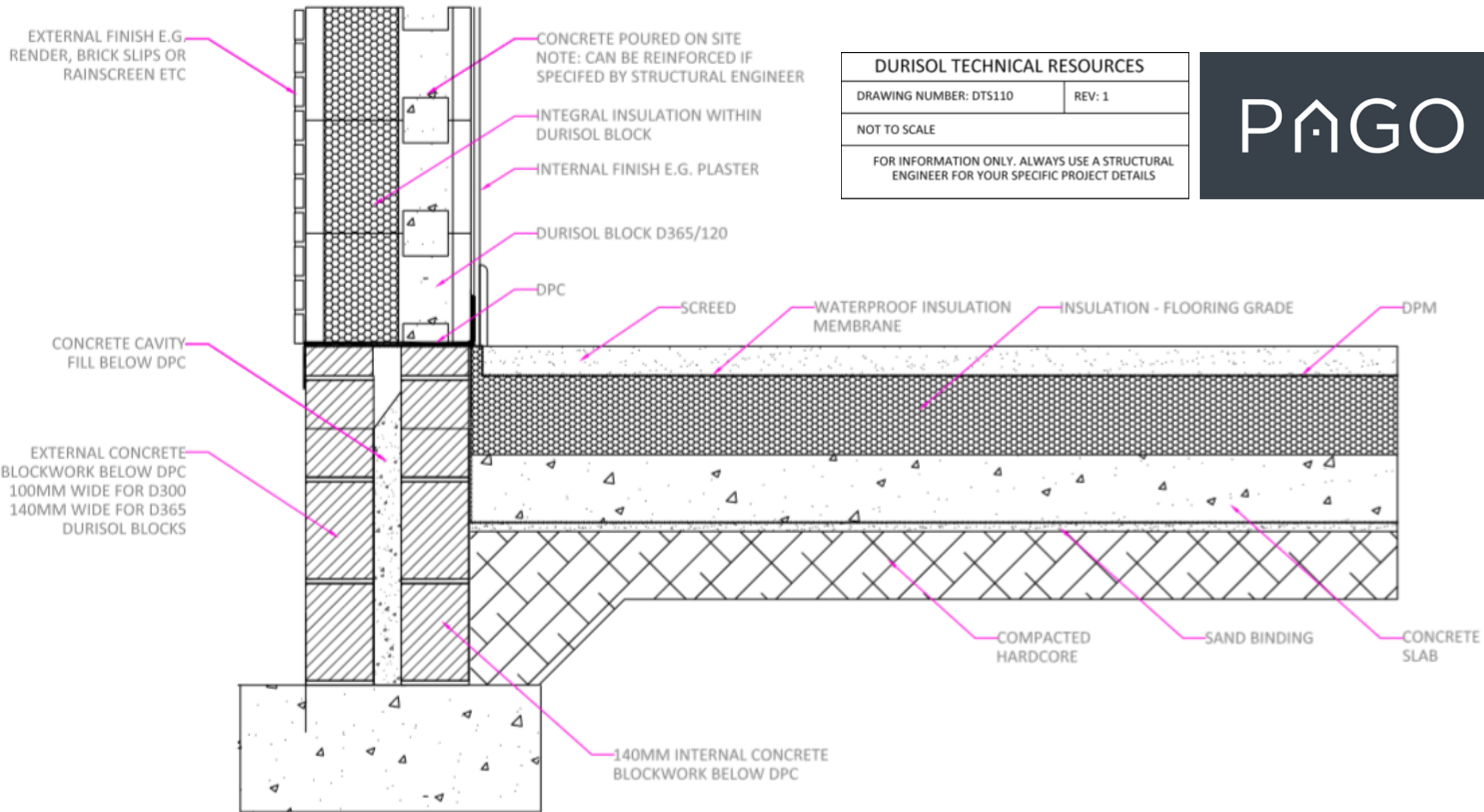
PAGO

D300 INTERNAL CORNER DETAIL



DURISOL TECHNICAL RESOURCES	
DRAWING NUMBER: DTP021	REV: 1
NOT TO SCALE	
FOR INFORMATION ONLY. ALWAYS USE A STRUCTURAL ENGINEER FOR YOUR SPECIFIC PROJECT DETAILS	

TYPICAL GROUND FLOOR-WALL JUNCTION BLOCKWORK BELOW DPC

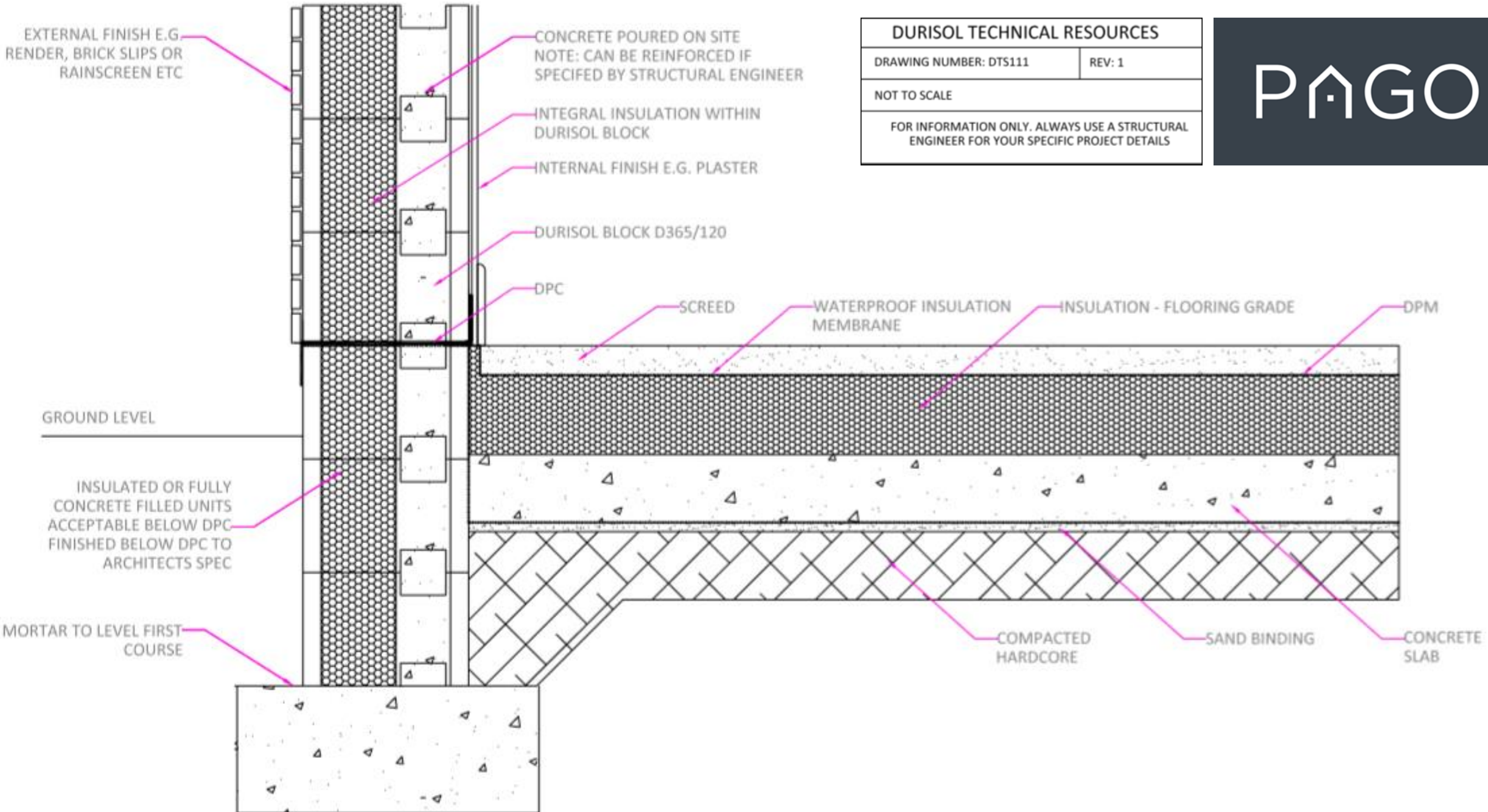


DURISOL TECHNICAL RESOURCES	
DRAWING NUMBER: DTS110	REV: 1
NOT TO SCALE	
FOR INFORMATION ONLY. ALWAYS USE A STRUCTURAL ENGINEER FOR YOUR SPECIFIC PROJECT DETAILS	



TYPICAL GROUND FLOOR-WALL JUNCTION DURISOL BELOW DPC

DURISOL TECHNICAL RESOURCES	
DRAWING NUMBER: DTS111	REV: 1
NOT TO SCALE	
FOR INFORMATION ONLY. ALWAYS USE A STRUCTURAL ENGINEER FOR YOUR SPECIFIC PROJECT DETAILS	



EXTERNAL FINISH E.G. RENDER, BRICK SLIPS OR RAINSCREEN ETC

CONCRETE POURED ON SITE
NOTE: CAN BE REINFORCED IF SPECIFIED BY STRUCTURAL ENGINEER

INTEGRAL INSULATION WITHIN DURISOL BLOCK

INTERNAL FINISH E.G. PLASTER

DURISOL BLOCK D365/120

DPC

SCREED

WATERPROOF INSULATION MEMBRANE

INSULATION - FLOORING GRADE

DPM

GROUND LEVEL

INSULATED OR FULLY CONCRETE FILLED UNITS ACCEPTABLE BELOW DPC FINISHED BELOW DPC TO ARCHITECTS SPEC

MORTAR TO LEVEL FIRST COURSE

COMPACTED HARDCORE

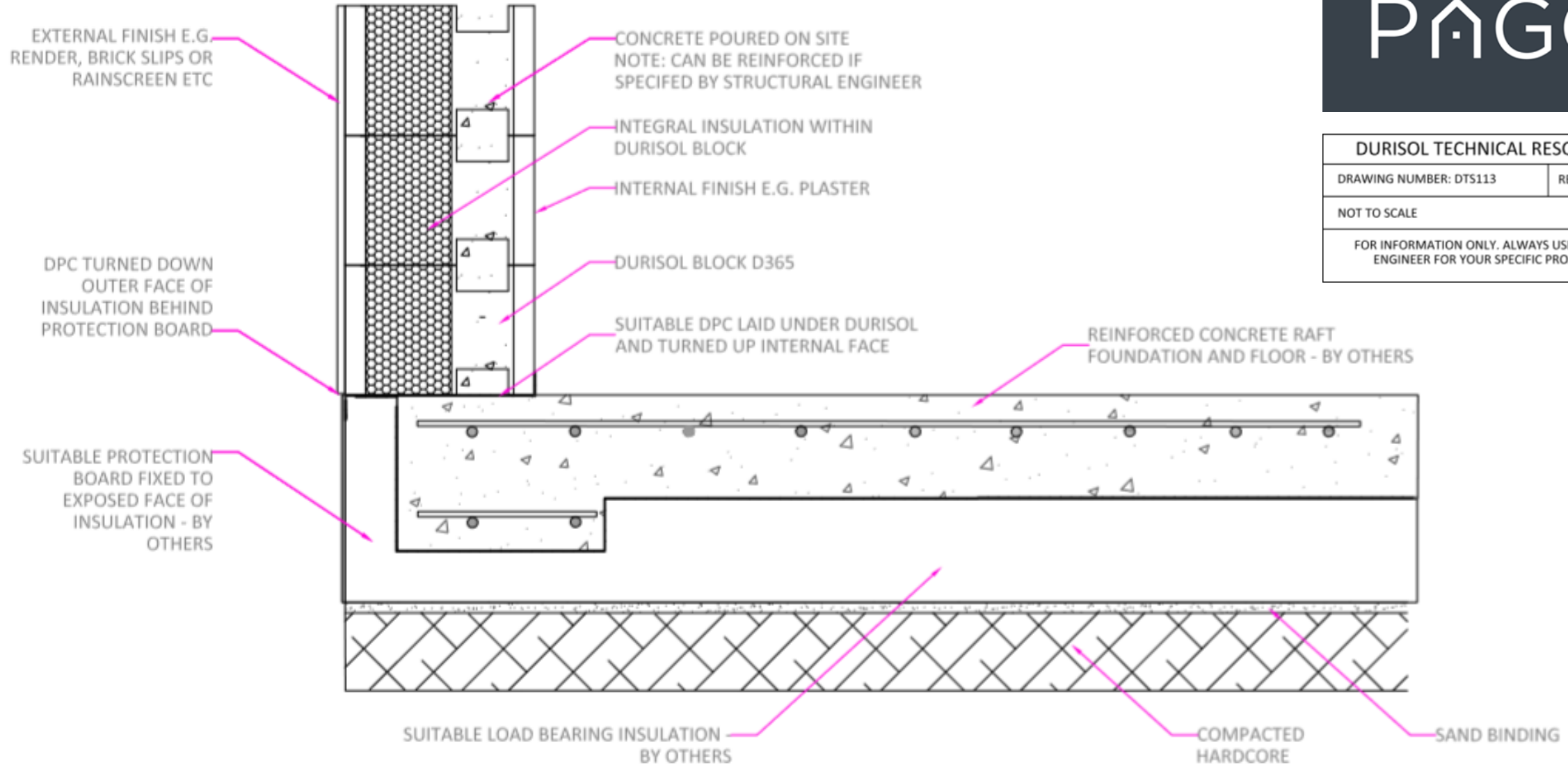
SAND BINDING

CONCRETE SLAB

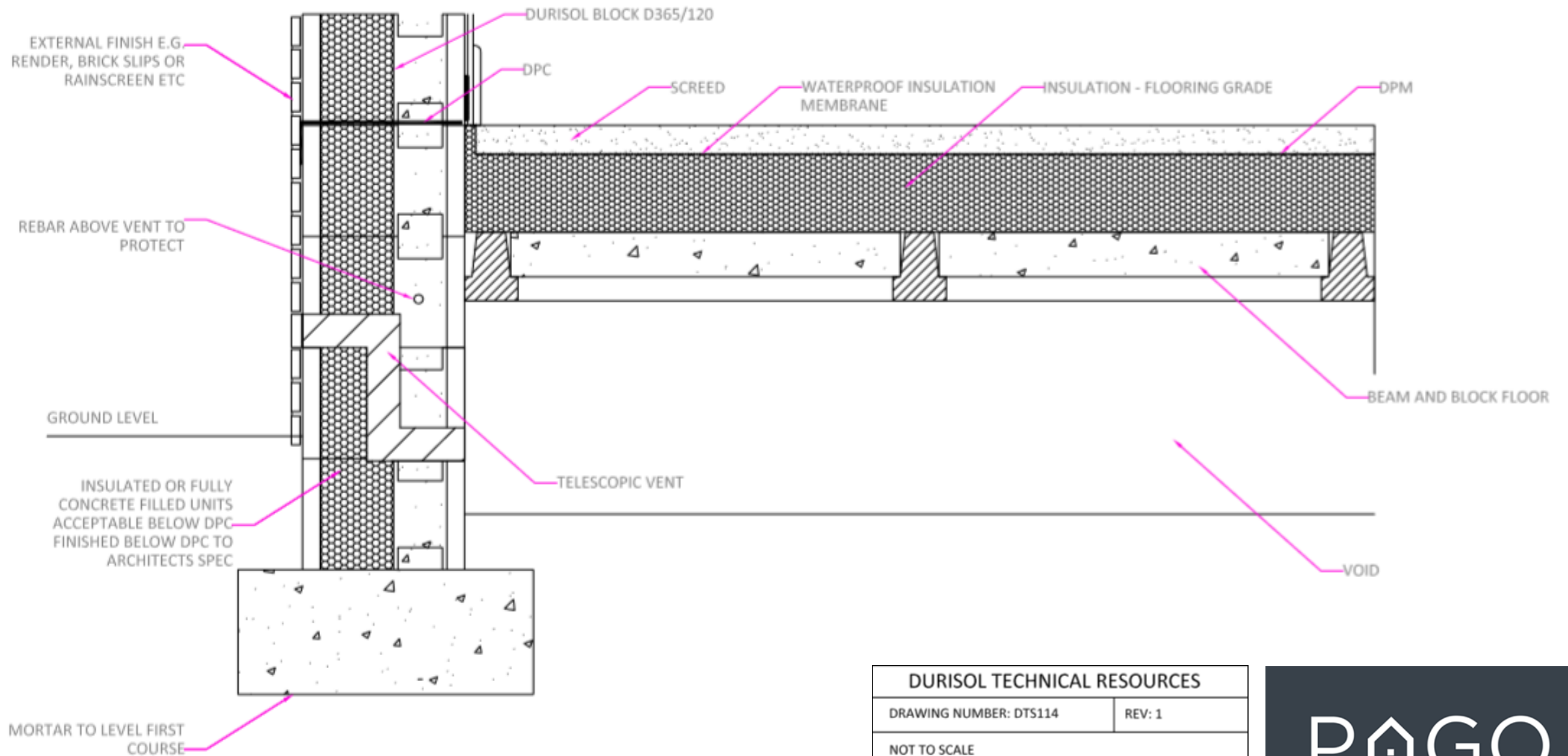
TYPICAL GROUND FLOOR-WALL JUNCTION CONCRETE RAFT FOUNDATION



DURISOL TECHNICAL RESOURCES	
DRAWING NUMBER: DTS113	REV: 1
NOT TO SCALE	
FOR INFORMATION ONLY. ALWAYS USE A STRUCTURAL ENGINEER FOR YOUR SPECIFIC PROJECT DETAILS	



TELESCOPIC VENT THROUGH DURISOL WALL



DURISOL TECHNICAL RESOURCES

DRAWING NUMBER: DTS114

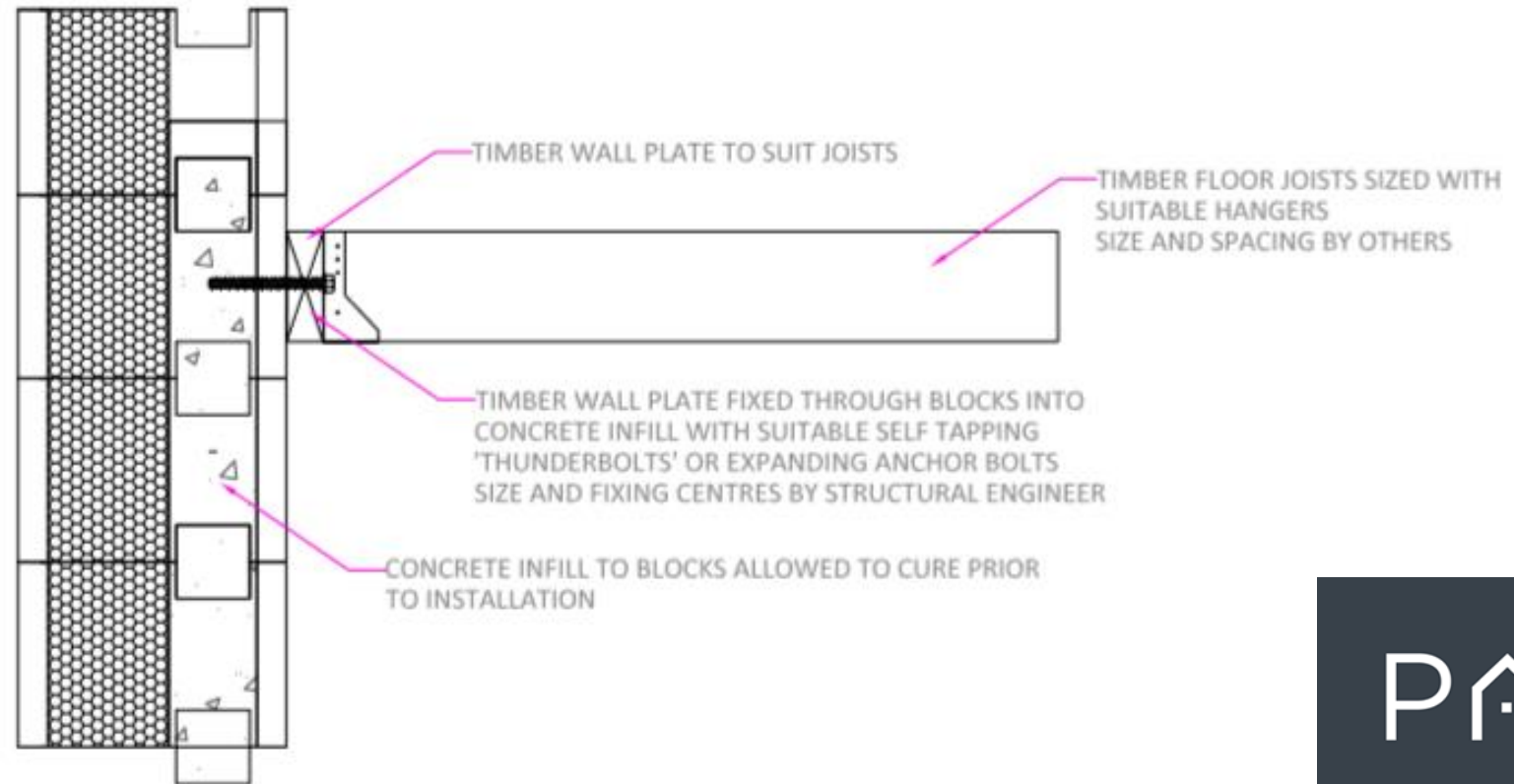
REV: 1

NOT TO SCALE

FOR INFORMATION ONLY. ALWAYS USE A STRUCTURAL ENGINEER FOR YOUR SPECIFIC PROJECT DETAILS

PAGO

TIMBER WALL PLATE INSTALLATION



PAGO

DURISOL TECHNICAL RESOURCES

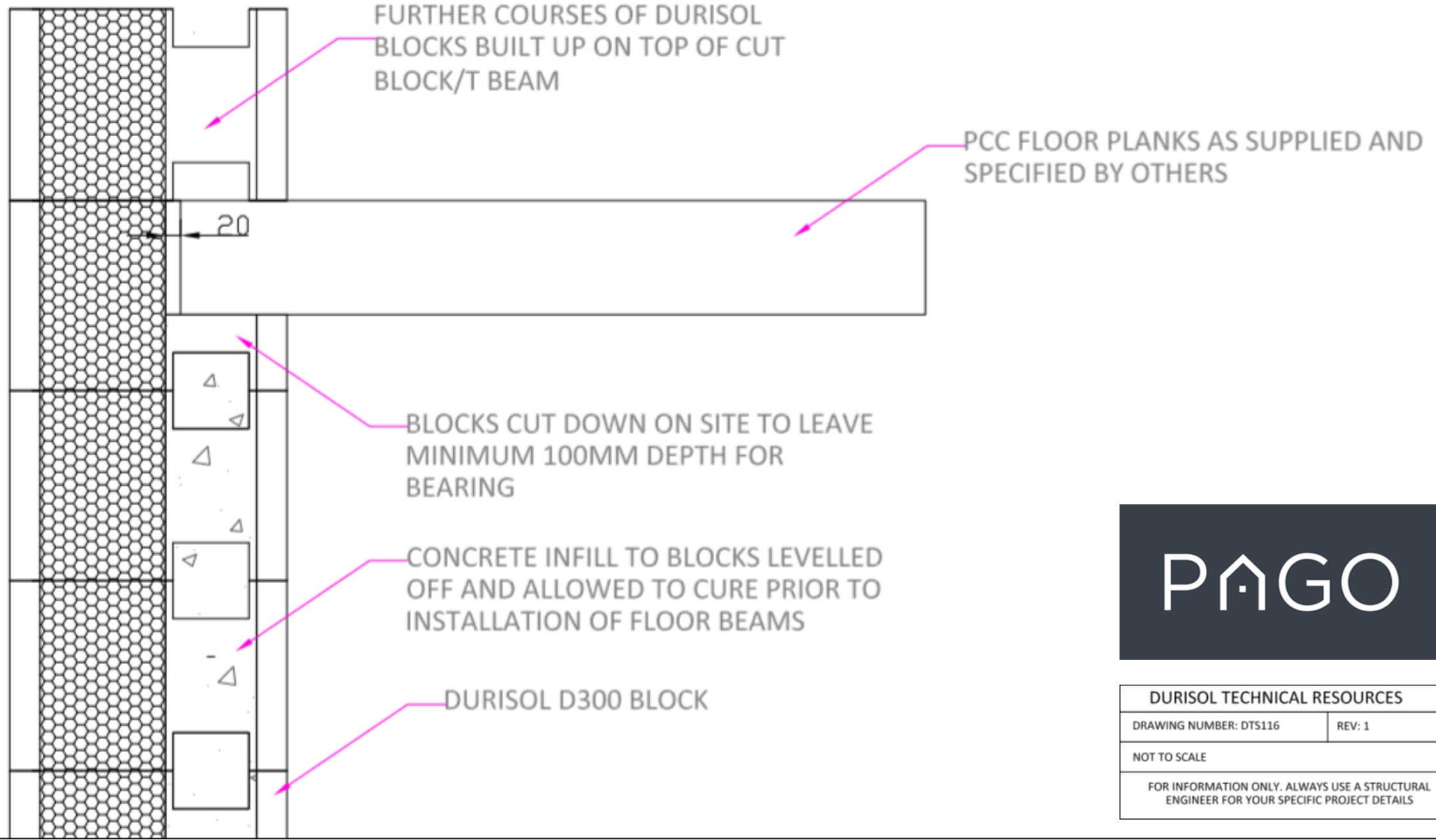
DRAWING NUMBER: DTS115

REV: 1

NOT TO SCALE

FOR INFORMATION ONLY. ALWAYS USE A STRUCTURAL ENGINEER FOR YOUR SPECIFIC PROJECT DETAILS

PCC PLANK INSTALLATION SECTION



PAGO

DURISOL TECHNICAL RESOURCES

DRAWING NUMBER: DTS116

REV: 1

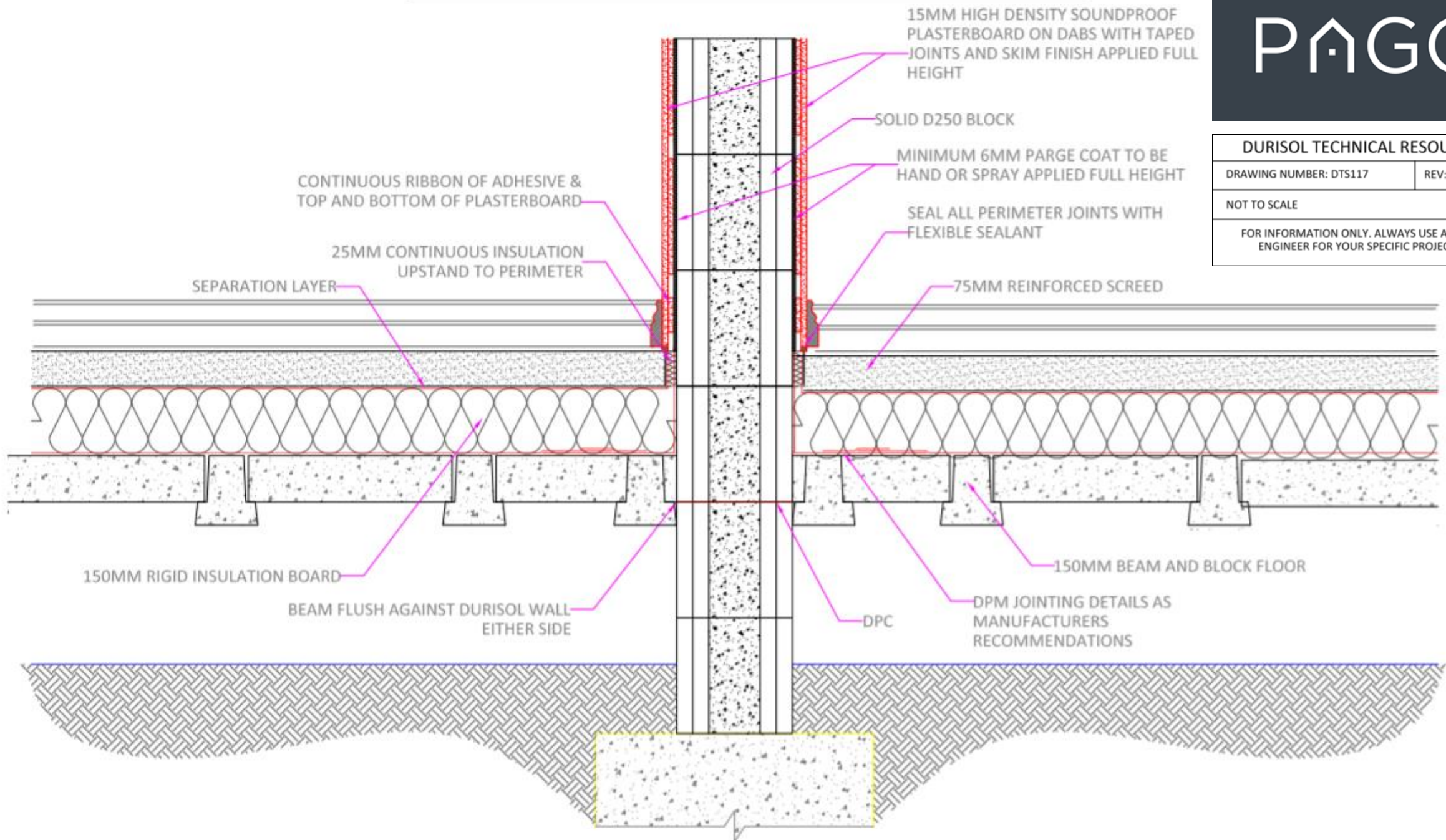
NOT TO SCALE

FOR INFORMATION ONLY. ALWAYS USE A STRUCTURAL ENGINEER FOR YOUR SPECIFIC PROJECT DETAILS

SEPARATING WALL - GROUND FLOOR



DURISOL TECHNICAL RESOURCES	
DRAWING NUMBER: DTS117	REV: 1
NOT TO SCALE	
FOR INFORMATION ONLY. ALWAYS USE A STRUCTURAL ENGINEER FOR YOUR SPECIFIC PROJECT DETAILS	



15MM HIGH DENSITY SOUNDPROOF PLASTERBOARD ON DABS WITH TAPED JOINTS AND SKIM FINISH APPLIED FULL HEIGHT

SOLID D250 BLOCK

MINIMUM 6MM PARGE COAT TO BE HAND OR SPRAY APPLIED FULL HEIGHT

SEAL ALL PERIMETER JOINTS WITH FLEXIBLE SEALANT

75MM REINFORCED SCREED

CONTINUOUS RIBBON OF ADHESIVE & TOP AND BOTTOM OF PLASTERBOARD

25MM CONTINUOUS INSULATION UPSTAND TO PERIMETER

SEPARATION LAYER

150MM RIGID INSULATION BOARD

BEAM FLUSH AGAINST DURISOL WALL EITHER SIDE

150MM BEAM AND BLOCK FLOOR

DPC

DPM JOINTING DETAILS AS MANUFACTURERS RECOMMENDATIONS

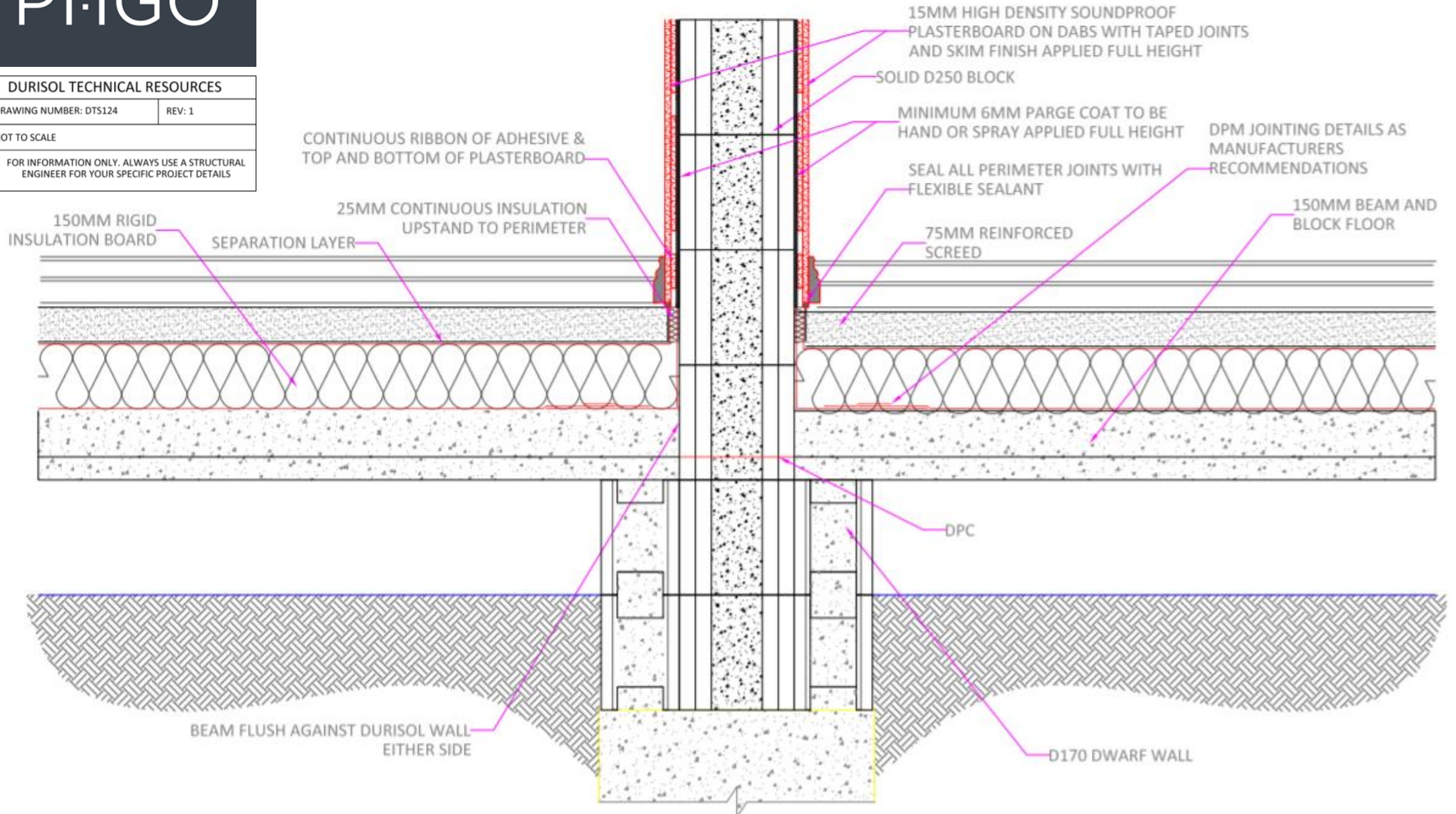
FLOOR SPAN – PARTY WALL

DURISOL TECHNICAL RESOURCES

DRAWING NUMBER: DTS124 REV: 1

NOT TO SCALE

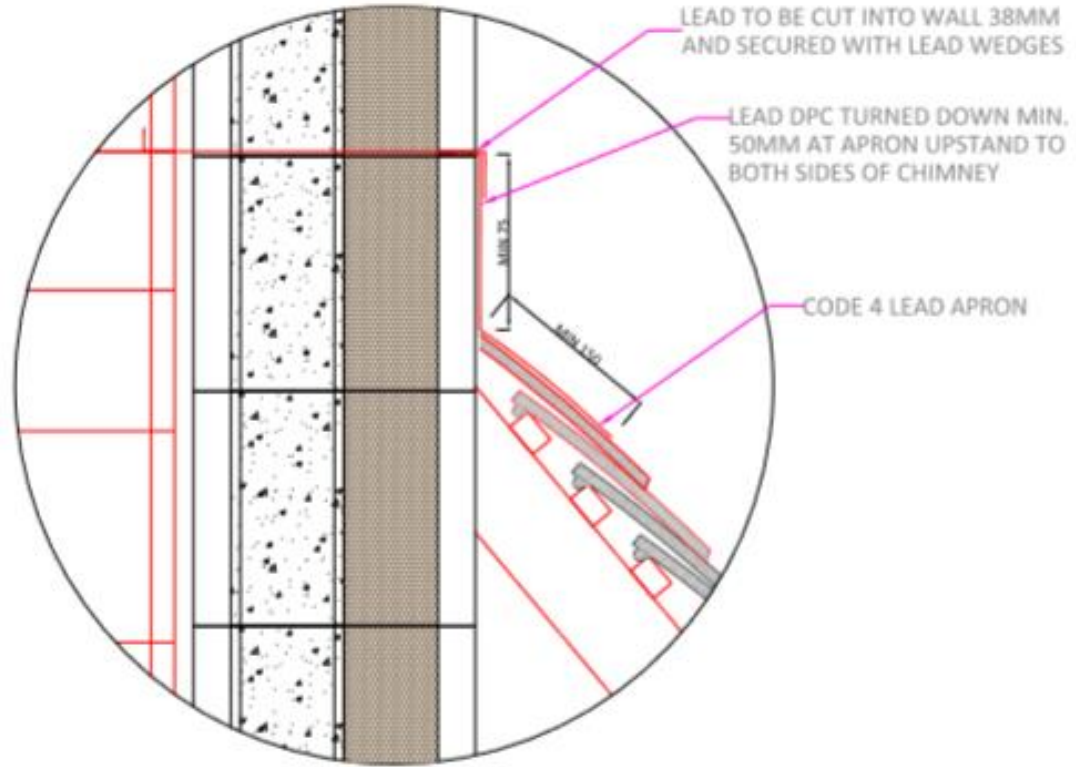
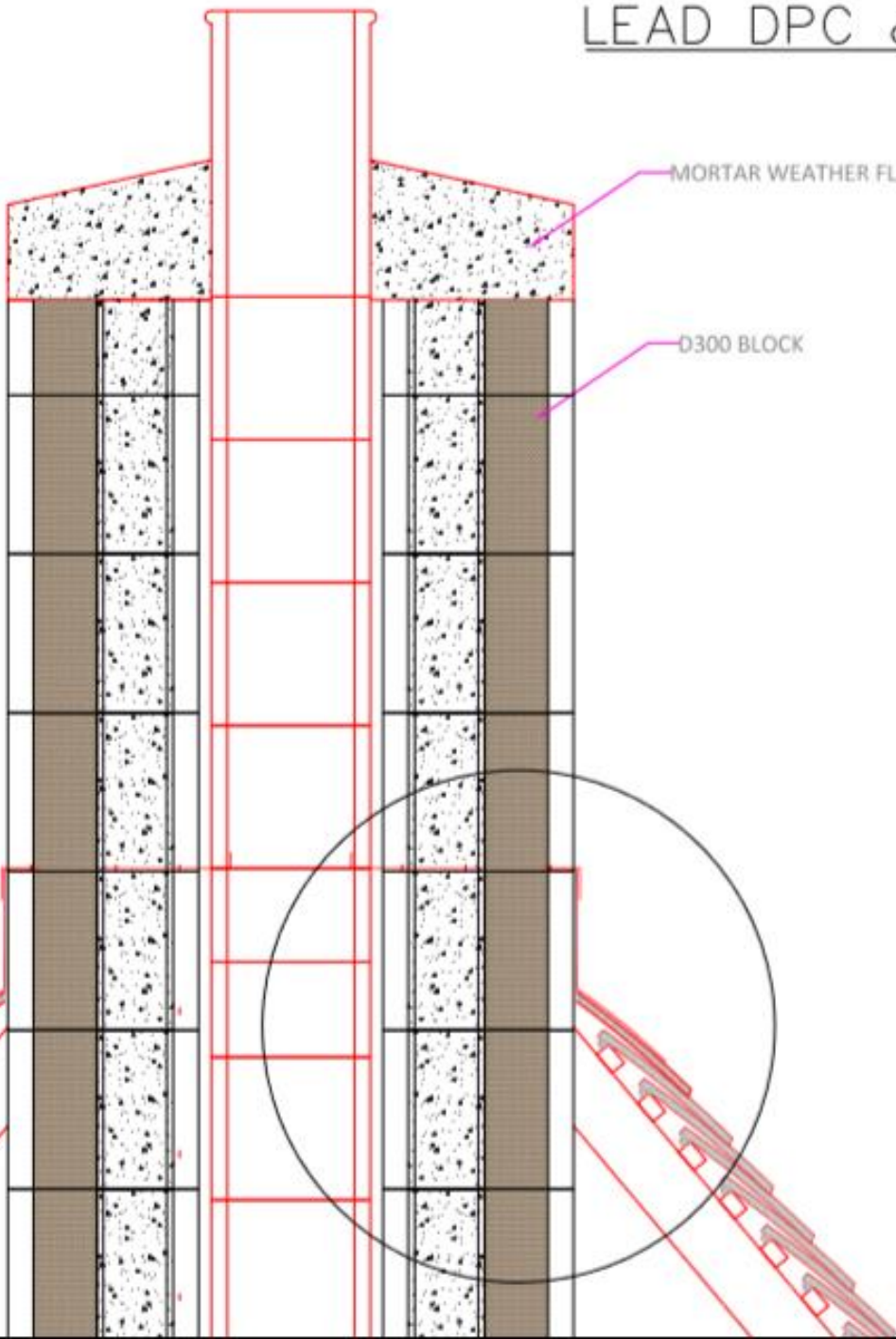
FOR INFORMATION ONLY. ALWAYS USE A STRUCTURAL ENGINEER FOR YOUR SPECIFIC PROJECT DETAILS



LEAD DPC & APRON SECTION



DURISOL TECHNICAL RESOURCES	
DRAWING NUMBER: DTS118	REV: 1
NOT TO SCALE	
FOR INFORMATION ONLY. ALWAYS USE A STRUCTURAL ENGINEER FOR YOUR SPECIFIC PROJECT DETAILS	



TYPICAL TRUSSED RAFTER INSTALLATION SECTION

PAGO

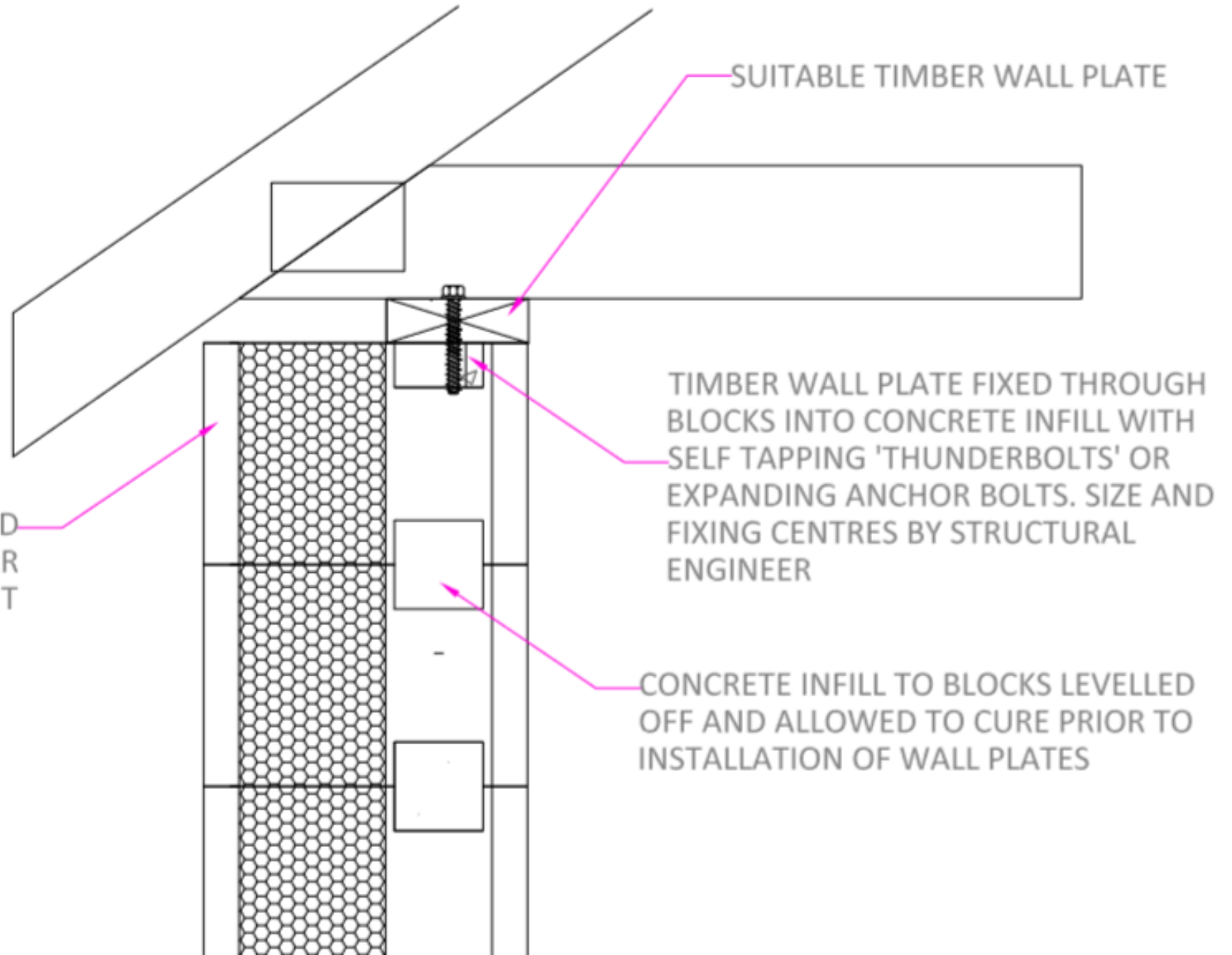
DURISOL TECHNICAL RESOURCES

DRAWING NUMBER: DTS120

REV: 1

NOT TO SCALE

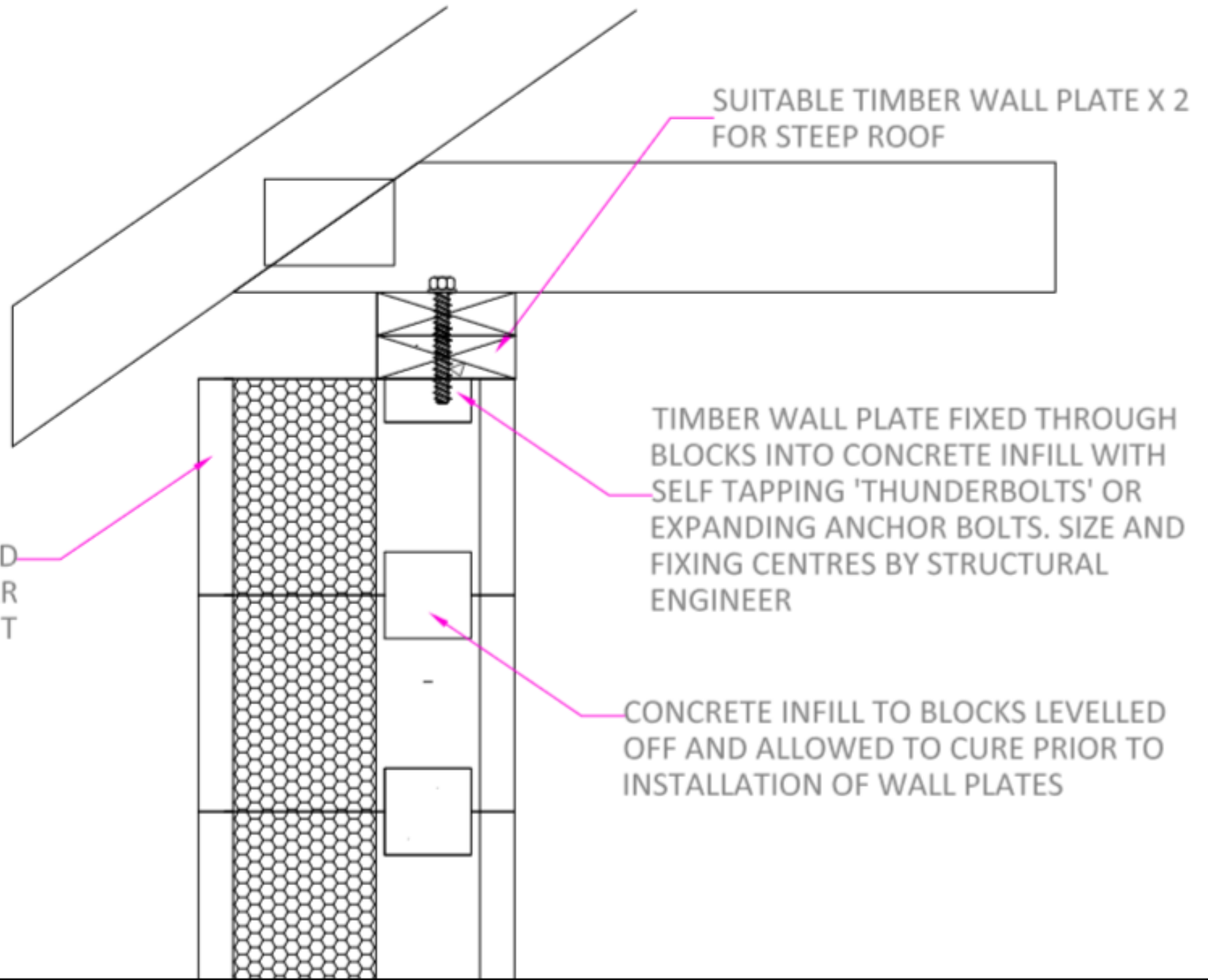
FOR INFORMATION ONLY. ALWAYS USE A STRUCTURAL ENGINEER FOR YOUR SPECIFIC PROJECT DETAILS



TYPICAL DOUBLE WALL PLATE TRUSSED RAFTER INSTALLATION SECTION



DURISOL TECHNICAL RESOURCES	
DRAWING NUMBER: DTS121	REV: 1
NOT TO SCALE	
FOR INFORMATION ONLY. ALWAYS USE A STRUCTURAL ENGINEER FOR YOUR SPECIFIC PROJECT DETAILS	



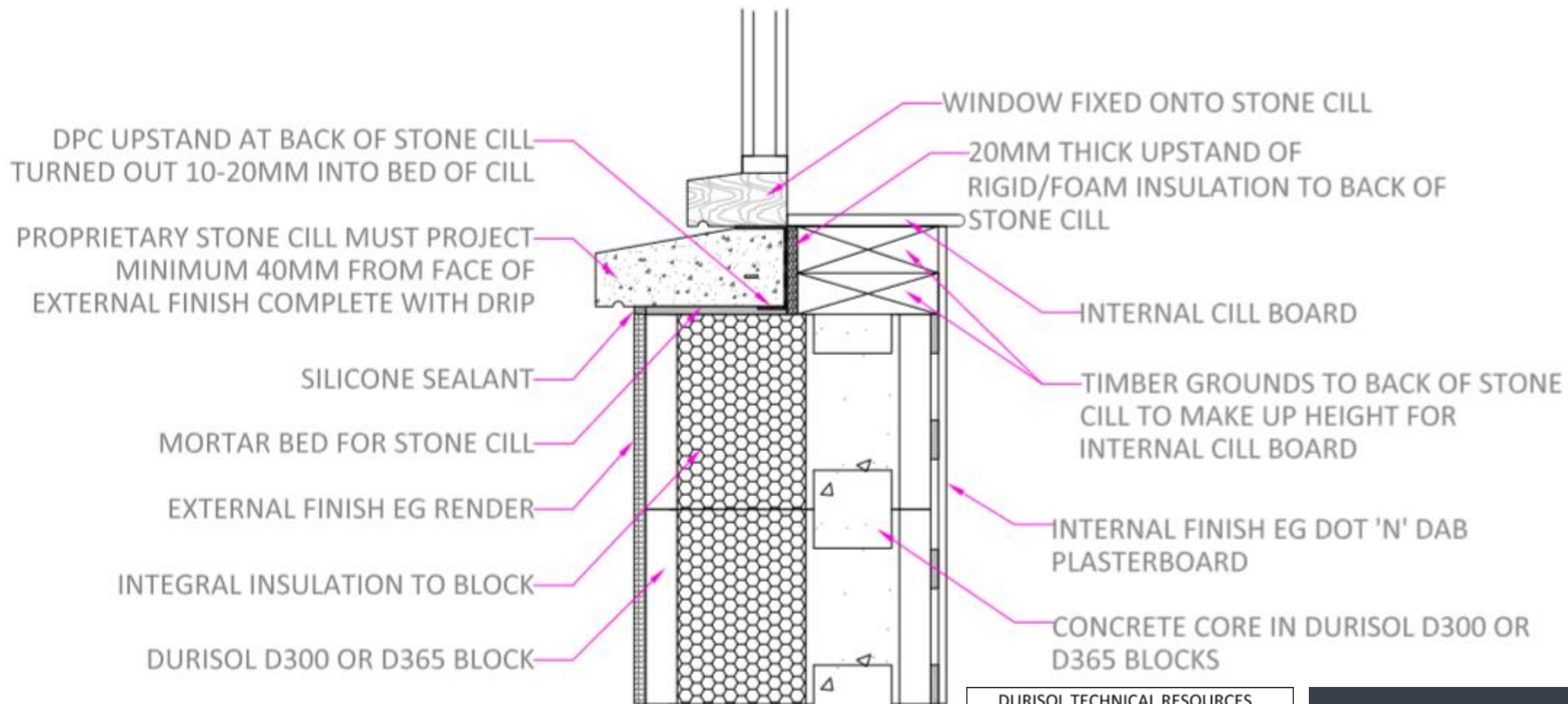
SUITABLE TIMBER WALL PLATE X 2 FOR STEEP ROOF

TIMBER WALL PLATE FIXED THROUGH BLOCKS INTO CONCRETE INFILL WITH SELF TAPPING 'THUNDERBOLTS' OR EXPANDING ANCHOR BOLTS. SIZE AND FIXING CENTRES BY STRUCTURAL ENGINEER

CONCRETE INFILL TO BLOCKS LEVELLED OFF AND ALLOWED TO CURE PRIOR TO INSTALLATION OF WALL PLATES

TOP COURSE OF BLOCKS MAY NEED CUTTING DOWN ON SITE TO CLEAR RAFTER FEET

STONE WINDOW CILL DETAIL



DURISOL TECHNICAL RESOURCES

DRAWING NUMBER: DTS130

REV: 1

NOT TO SCALE

FOR INFORMATION ONLY. ALWAYS USE A STRUCTURAL
ENGINEER FOR YOUR SPECIFIC PROJECT DETAILS

PAGO